



BUILDING A SHARED FUTURE

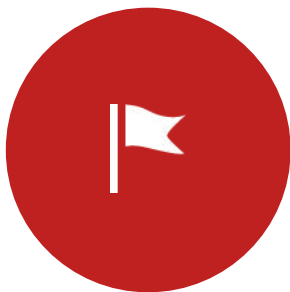
THE 5TH CHINA INTERNATIONAL IMPORT EXPO
SPECIAL INNOVATION INCUBATION SECTION



PART ONE

01 CIIE OVERVIEW





**国家贸易投资综合展
(线上展)**

**COUNTRY PAVILION FOR TRADE
AND INVESTMENT**

主宾国+参展国及国际组织
host countries + national pavilions



企业商业展

**ENTERPRISE & BUSINESS
EXHIBITION**

服务贸易+货物贸易6大展区
**6 sections of trade in goods and
services**



**虹桥国际经济论坛
(线上线下结合)**

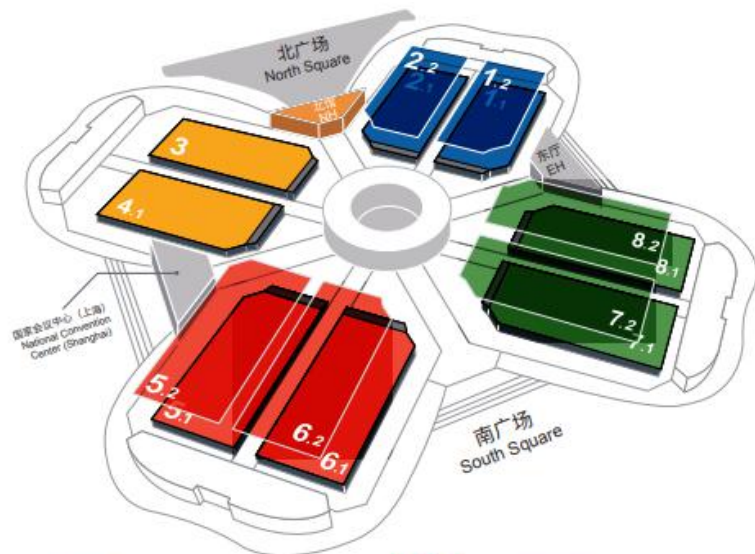
**HONGQIAO INTERNATIONAL
ECONOMIC FORUM**

主论坛开幕式+平行分论坛
opening ceremony + parallel forums



2021 CIIE KEY DATA

CIIE NEW ERA
SHARED FUTURE
新时代 共享未来



- | | | | | | |
|---|------------------------|--|--|---|---------------------------------|
| 1.1
1.2
2.2 | 2.1 | 3
4.1 | 5.1
5.2
6.1
6.2 | 7.1
7.2
8.1 | 8.2 |
| 食品及农产品
展区
Food and Agricultural
Products | 汽车
展区
Automobile | 技术装备
展区
Intelligent Industry &
Information Technology | 消费品
展区
Consumer Goods | 医疗器械及医药保健
展区
Medical Equipment &
Healthcare Products | 服务贸易
展区
Trade in Services |

\$ 7.072B

onsite intended purchase agreement (annual value)

366,000m²

exhibition area

127

countries & regions

2,900+

company exhibitor

480,000人

expo visitors

3,000+

media interviews new featured product & services

422

273

MOU after B2B meetings

95

conferences & events

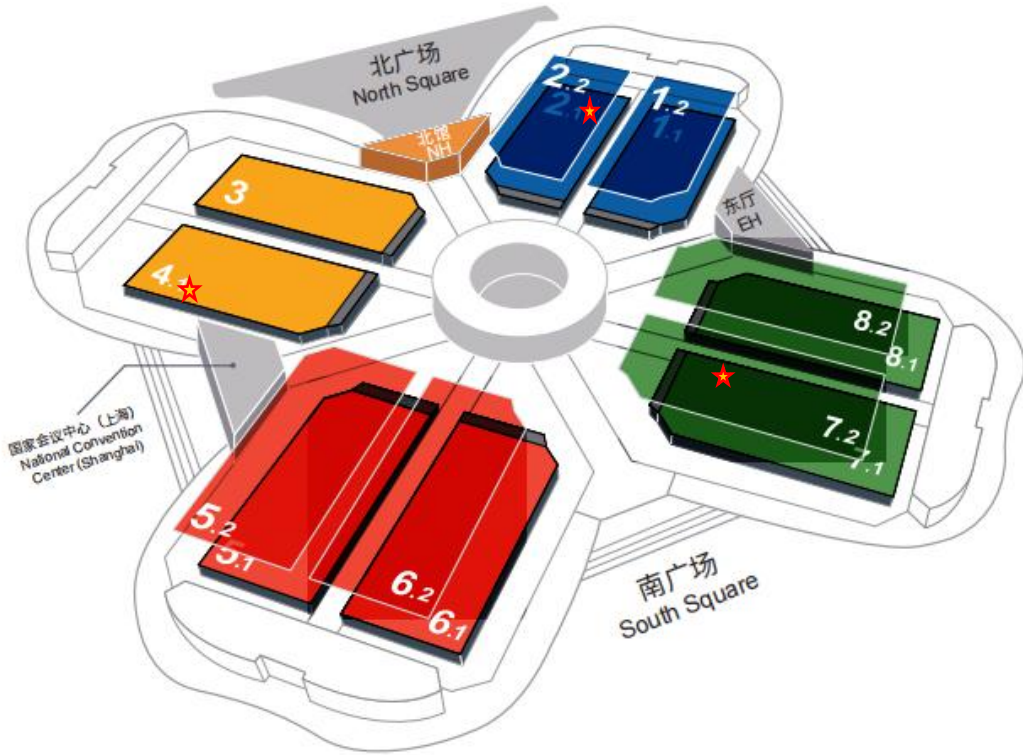
281

top 500 exhibitors





2022 SIX EXHIBITION FEATURES



1.1H 1.2H 2.2H

Food and Agricultural Products

2.1H

Automobile
★ INNOVATION SECTION

3H 4.1H NH

Intelligent Industry & Information Technology

5.1H 5.2H 6.1H 6.2H

Consumer Goods

★ INNOVATION SECTION

7.1H 7.2H 8.1H

Medical Equipment & Healthcare Products

8.2H

Trade & Services

★ INNOVATION SECTION

PART TWO

02

TO CREATE A TESTBED AND LANDING PAD
FOR GLOBAL INNOVATIVE SMES

— 2021 CIIE INNOVATION INCUBATION SECTION OVERVIEW



01

SPECIAL SECTION IS
LOCATED IN MOBILITY
(H2.1) , TECH
EQUIPMENT (H4.1) ,
HEALTHCARE (H7.2)

02

71SME EXHIBITOR WITH
1000+ SQM EXHIBITION
AREA

03

MAIN AREA: SMART
MOBILITY, AI,
HEALTHCARE
TECHNOLOGY, BIOTECH,
3D PRINTING,
AI+HEALTHTECH





**TOTAL
PURCHASE
AGREEMENT**
71 SMES
211.70M USD



**HEALTH
TECH**
26 SMES
550K USD



EQUIPMENT
30SMES
14.48M USD



MOBILITY
15 SMES
196.66M USD

2022



CHINA INTERNATIONAL IMPORT EXPO

PART THREE

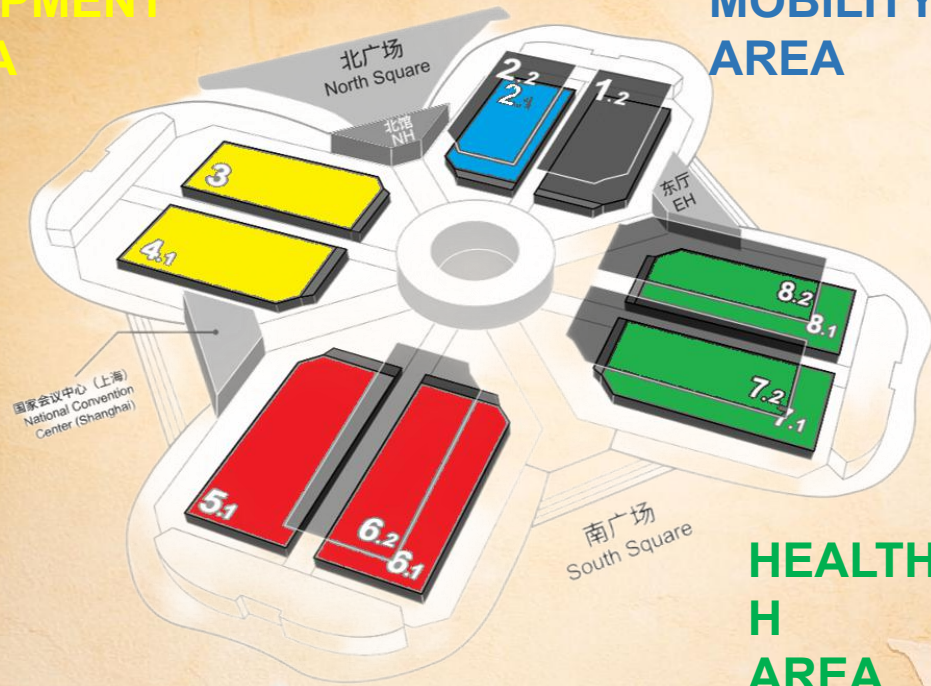
03 2022 INNOVATION INCUBATION SECTION INTRODUCTION



INNOVATION INCUBATION SECTION MAP

EQUIPMENT
AREA

MOBILITY
AREA



HEALTHTEC
H
AREA

CONSUMER
PRODUCT
AREA





中国国际进口博览会 CHINA INTERNATIONAL IMPORT EXPO

CIIE NEW ERA
SHARED FUTURE
新时代 共享未来

AUTOMOBILE EXHIBITION AREA

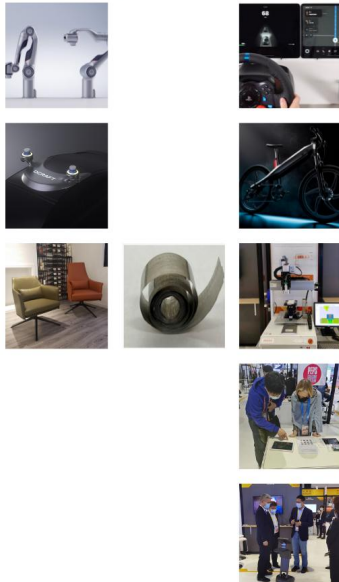
With the industry as the starting point and the industrial chain as the support, the start-ups in the Automobile Exhibition Area have obtained various resources from BMW and other companies and platforms such as TuStar, among which electric drive has obtained the docking intention of a European car company and the contact channels of several suppliers. The "Automobile, Innovation Cluster, Internet of Things and Smart Ecology" activity coincided with the 4th CIIE successfully helped start-ups explore the Chinese market, find partners and promote the integration of upstream and downstream industrial chains.

INTELLIGENT INDUSTRY & INFORMATION TECHNOLOGY EXHIBITION AREA

The Intelligent Industry & Information Technology Exhibition Area has expanded business channels for 30 technology incubators from more than 10 countries, including the United States, Germany, Denmark, and Finland, by establishing negotiations with local governments, connecting with financial institutions, and participating in media reports, and has built a bridge for cooperation with the Bank of China, China Chamber of Commerce for Electromechanical Industry and other institutions. Among them, Germany Songzhi Intelligent Technology Co., Ltd. has been reported by many media, effectively expanding the circle of friends and ecological circle of local innovation and entrepreneurship.

MEDICAL EQUIPMENT & HEALTHCARE PRODUCTS EXHIBITION AREA

Medical Equipment & Healthcare Products Exhibition Area introduces global cutting-edge medical solutions to the world largest market and facilitate its growth in China. In 2021, 27 global innovative medical products from the U.S., Israel, Italy debuted at the CIIE, broadly engaging with Chinese regulators, investors and commercial partners. They have received widespread attention and positive feedback from diverse audiences, including industry players, PE/VCs, policy-makers, as well as medical experts. By May 2022, six projects reached the deal with Chinese medical device companies and leading healthcare PEs. One project kicked off its clinical study with Chinese medical institutions, and two projects are going through market research for accelerating commercialization in China.



2021 REVIEW OF EXHIBITS

2021 EFFECT OF IMPLEMENTATION

2022 LAYOUT OF SPECIAL SECTIONS



AUTOMOBILE EXHIBITION AREA

The exhibits in the Innovation Incubation Special Section of the Automobile Exhibition Area focus on autonomous driving, digital travel solutions, new energy, intelligent networking, automobile design and other sectors, aiming to build an open innovation platform for outstanding industry start-ups, which integrates exhibition, incubation guidance, technology and finance, international docking and other functions.



INTELLIGENT INDUSTRY & INFORMATION TECHNOLOGY EXHIBITION AREA

The Innovation Incubation Special Section of the Intelligent Industry & Information Technology Exhibition Area focuses on the core areas such as electronic information, aerospace, new materials, new energy and energy conservation, resources and environment, new technology transformation and advanced automation manufacturing, and strives to introduce "small-but-excellent" overseas enterprises to showcase innovative and technological products in a concentrated way.



EXHIBITOR INVITATION LETTER

Dear global sci-tech innovation SMEs,

Since the first session, the China International Import Expo (CIIE) has continued to serve as the platform for international procurement, investment promotion, cultural exchanges, and open cooperation and has become a "big stage" for high-end, sophisticated, cutting-edge, special, and new products. Exhibitors at the first four CIIEs released more than 1,500 new products, technologies, and services, with a cumulative intended turnover of more than USD 270 billion. The CIIE focuses on bringing together science and technology and provides an exhibition platform for innovative incubators.

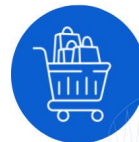
The 5th CIIE will continue to set up an Innovation Incubation Special Section. Focusing on the theme of "Incubating the Future by Technological Innovation", the Special Section will focus on exhibiting innovative global technologies and products in the four fields of automobiles, technical equipment, consumer goods, medical appliances, and medicine and health care, helping start-ups and innovative achievements to move to the "fast lane" of rapid development. The innovative incubation model accelerates the "originality" of science and technology. In order to build an innovative incubation system of "acceleration of incubation + investment-driven + open scenarios", the 5th CIIE has set up attractive booth prices and a forward-looking exchange platform, booth construction with rendering power, and a strong scientific and technological atmosphere. The area where the Innovation Incubation Special Section is located will be adjacent to enterprises in the same industry and Fortune 500 companies. Enterprises in the Special Section can more accurately communicate with the government, investment institutions, universities and colleges, and gain coverage and attention from domestic and foreign media.

We hereby sincerely invite your company to bring the most innovative and leading technology incubation projects to the Innovation Incubation Special Section of the CIIE, and let us work together to help technology change the world!



MEDICAL EQUIPMENT & HEALTHCARE PRODUCTS EXHIBITION AREA

The Innovation Incubation Special Section of the Medical Equipment & Healthcare Products Exhibition Area focuses on health technology, immune tumor, angiocardiopathy, microbiology, 3D printing, AI+ and other fields. It gathers industries, capital and policies, and brings together cutting-edge innovations from the world's top markets, aiming to build a one-stop platform to accelerate entry into China and deeply expand the local innovation ecology of the medical technology industry.



CONSUMER GOODS EXHIBITION AREA

The Innovation Incubation Special Section (sports) focuses on sports science and technology, application of new materials, bionics, sports rehabilitation and other fields, attracting overseas high-quality start-up technology incubation enterprises to show up and bring overseas sports high-tech products to the exhibition, so that the audience can experience cutting-edge sports technology and get more sports fun.

The Innovation Incubation Special Section (fashion design) focuses on the development of three major fashion design fields: "sustainable design", "functional design" and "virtual reality design", attracting a group of overseas fashion designers and well-known design colleges. Combined with the application of international accessories and raw materials of brand enterprises, through the "fashion + technology" exhibition, it will trigger more thinking and industrial transformation in fashion design circles, so that design can lead the fashion and shine in the exhibition.



THE FIFTH CHINA INTERNATIONAL IMPORT EXPO

INNOVATION INCUBATION SPECIAL SECTION

CIIE has provided an exhibition platform for global small and micro enterprises of the sci-tech innovation type, dredged contact channels with local governments, industrial parks, financial institutions and media platforms, and offered opportunities for direct contact and communication with Fortune 500 enterprises, thus opening the door to opportunities.

The 4th CIIE has set up innovation incubation special sections in the Automobile Exhibition Area, Intelligent Industry & Information Technology Exhibition Area and Medical Equipment & Healthcare Products Exhibition Area for the first time. And 71 exhibitors participated in the exhibition, with the exhibition area of over 1,000 square meters and the intended turnover of USD 210 million.

EFFECTIVE TRADE AND INVESTMENT DOCKING AND CUSTOMER MATCHING

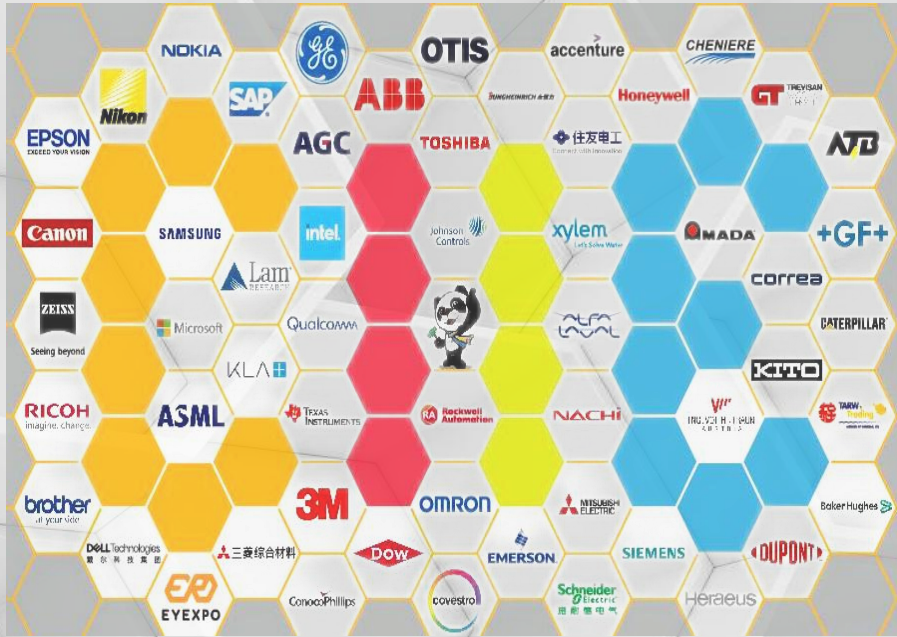
In each Innovation Incubation Special Section, a number of activities integrating exhibition with trade and featuring precise docking of exhibitors will be held.

MEDIA EXPOSURE AND INTERVIEW OPPORTUNITIES

The follow-up reports from the central media, overseas media and relevant industry media will be available.



CONNECTING WITH EXHIBITORS VIA CIEE



时尚潮流及珠宝



体育用品及赛事



SPECIAL TO VENTURE CUP CHINA STARTUPS



- **Primely**-located at Venture Cup China area in the Innovation Session
- **Raise brand exposure** to a huge audience and gain quick access to the China market
- **4.5m² booth space** for startups participation
- **On-site physical representation** for startups participating online
- **B2B matchmaking**
- **New Product Launch Platform**
- **Expand your network** and connect with local experts and buyers
- **Get media coverage**



WELCOME NORDIC TECH STARTUP TO JOIN US AND JOIN A SHARED FUTURE



CIIE NEW ERA
SHARED FUTURE
新时代 共享未来